

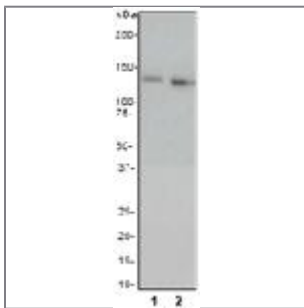
**Adducin alpha Antibody Phospho (pS481)**

Rabbit Monoclonal Antibody

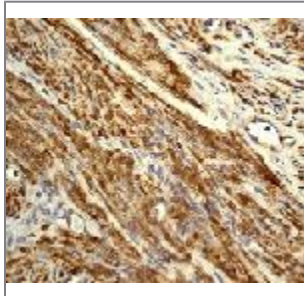
<b>Catalog #</b>	<b>Applications:</b>	<b>Reactivity:</b>	<b>Accessions:</b>
AJ1015b	WB, IHC, ICC, IP	H, M, R	<a href="#">P35611</a>
<b>Concentration:</b>	<b>Size:</b>	<b>Isotype:</b>	<b>Clone Name:</b>
	100ul		EP733Y

**Application Data:**

**Calculated MW: 130 k Da**



A. Western blot analysis on (1) HeLa cell lysate and (2) HeLa lysate + TPA using anti-Phospho-Adducin (pS481) RabMAb (Cat. #AJ1015b), dilution 1:20,000.



B. Immunohistochemical analysis of paraffin-embedded human uterus using anti-Adducin alpha Rab MAb. (Cat. #AJ1015b).

**Gene ID:**

[118](#)

**Gene Symbol:**

ADD1

**Other Names:**

ADD1, ADDA, Alpha-adducin, Erythrocyte adducin subunit alpha

**Target/Specificity:**

A synthetic phospho-peptide corresponding to residues surrounding Ser481 of human alpha Adducin was used as an immunogen. The antibody only detects alpha Adducin phosphorylated on Serine 481.

